

Stratix Verification Software (SVS)

Organize and Interpret bar code scan data with ease.

Stratix Verification Software (SVS) is the bar code analysis and reporting tool designed to work hand-in-hand with the Xaminer Elite verifier. SVS helps guarantee the accuracy and quality of printed bar codes. This software makes it easy to organize and interpret bar code scan data collected by the verifier. Flexible and intuitive, SVS provides a graphical representation of each scan for review and evaluation.

Stratix customers utilizing SVS receive a CD that allows easy installation on a Windows based PC. Due to Stratix Corporation's continued process improvements, SVS also allows for simple field upgradable software updates.

SVS enables the user to control the functionality of the verifier for hands free operation. When mobility is necessary, scanned data can conveniently be uploaded from the Xaminer Elite verifier to SVS with the touch of a button.

Enhanced analysis capabilities allow the user to customize the scan data for specific reporting needs. This criterion includes selection of statistical data, Scan Reflectance Profile (SRP) of each scan and simple exportation of data to a pre-formatted Microsoft Excel spreadsheet. The scan data can be archived in the software application or through the use of Microsoft Excel. Finally, SVS provides several print options that allow the user to send verification reports to a local or network printer.



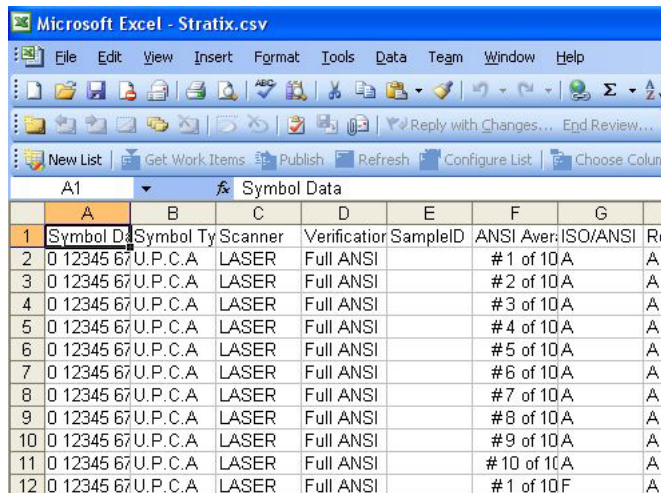
Software Features

- Windows based Software
- Allows "hands free" operation of verifier
- Automatically records every scan
- Ability to view ANSI & Traditional Grades
- Scan Reflectance Profile
- Auto-Scan Feature
- Simple Export to Microsoft Excel
- Scan now, Print later
- Ability to print to desktop printer
- Customized Reporting
- Field Installable Updates

Supported Operating Systems:

Microsoft Windows 95, 98SE, NT 4.0 w/ Spk. 6, ME, 2000, XP, Vista

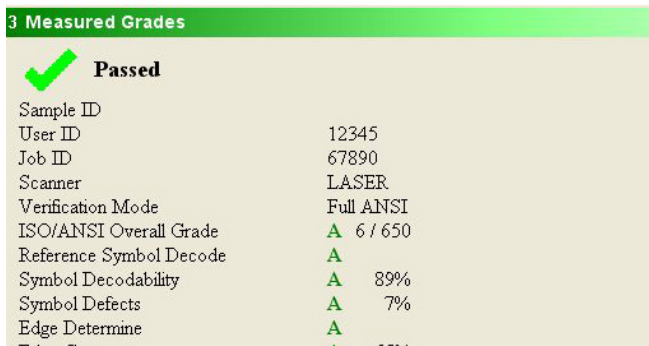
Simple Export to Microsoft Excel




	A	B	C	D	E	F	G	H
1	Symbol Data	Symbol Ty	Scanner	Verification	SampleID	ANSI Aver	ISO/ANSI	Rt
2	0	12345 67 U.P.C.A	LASER	Full ANSI		# 1 of 10 A		A
3	0	12345 67 U.P.C.A	LASER	Full ANSI		# 2 of 10 A		A
4	0	12345 67 U.P.C.A	LASER	Full ANSI		# 3 of 10 A		A
5	0	12345 67 U.P.C.A	LASER	Full ANSI		# 4 of 10 A		A
6	0	12345 67 U.P.C.A	LASER	Full ANSI		# 5 of 10 A		A
7	0	12345 67 U.P.C.A	LASER	Full ANSI		# 6 of 10 A		A
8	0	12345 67 U.P.C.A	LASER	Full ANSI		# 7 of 10 A		A
9	0	12345 67 U.P.C.A	LASER	Full ANSI		# 8 of 10 A		A
10	0	12345 67 U.P.C.A	LASER	Full ANSI		# 9 of 10 A		A
11	0	12345 67 U.P.C.A	LASER	Full ANSI		# 10 of 10 A		A
12	0	12345 67 U.P.C.A	LASER	Full ANSI		# 1 of 10 F		A

The export operation automatically opens an Excel spreadsheet with preformatted column headings, and places the results for each record in the appropriate column. The Excel CSV file may be saved as an Excel Worksheet using the standard Excel tools.

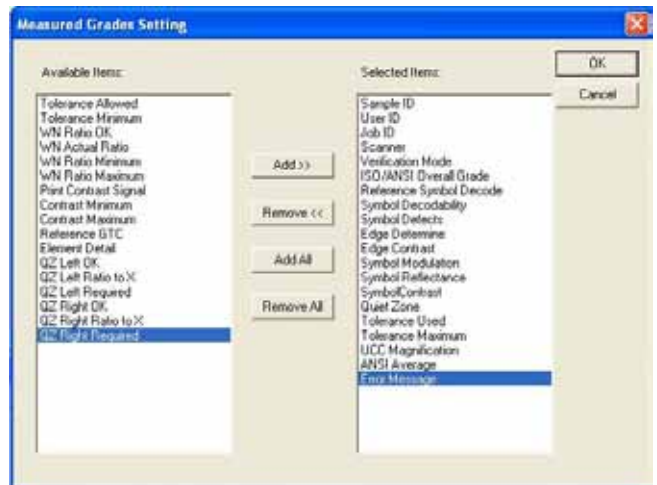
Measured Grades



3 Measured Grades	
	Passed
Sample ID	
User ID	12345
Job ID	67890
Scanner	LASER
Verification Mode	Full ANSI
ISO/ANSI Overall Grade	A 6 / 650
Reference Symbol Decode	A
Symbol Decodability	A 89%
Symbol Defects	A 7%
Edge Determine	A
Tolerance Used	A
Tolerance Maximum	A
UCC Magnification	A
ANSI Average	A
Error Message	

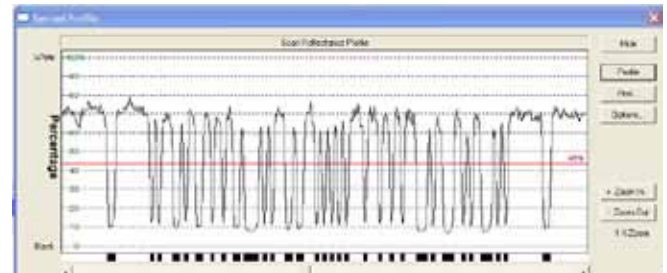
The Measured Grades window displays the verification parameters reported by the Xaminer Elite verifier. This window displays analysis results for the active record. Typically, this is the most recently scanned or uploaded record; however, it may be any selected record from the active SVS file.

Customized Reporting



Verification reports can be customized by the user utilizing the Measured Grades Setting window. This feature provides the user with a list of parameters that may be "added" or "removed" at any time during a verification session.

Scan Reflectance Profile



The SRP illustrates the bars and spaces in the code. The red line represents the Global Threshold. The peaks above the Global Threshold indicate spaces and the peaks below the Global Threshold indicate bars. The bottom of the SRP window recreates the bar code based on the digital values displayed in the graph.

**For any questions you may have about your SVS Software call 1.800.883.8300
and ask for a Verification Account Manager.**